

FREDERICK DOUGLASS TUNNEL PROJECT

PACKAGE A



Diverse Subcontractor & Supplier Outreach Event

**The presentation will
begin shortly.**

*Please “sign in” by typing your name
and company in the Q&A panel at the
right side of the screen.*

May 16, 2024




FREDERICK DOUGLASS TUNNEL PROJECT

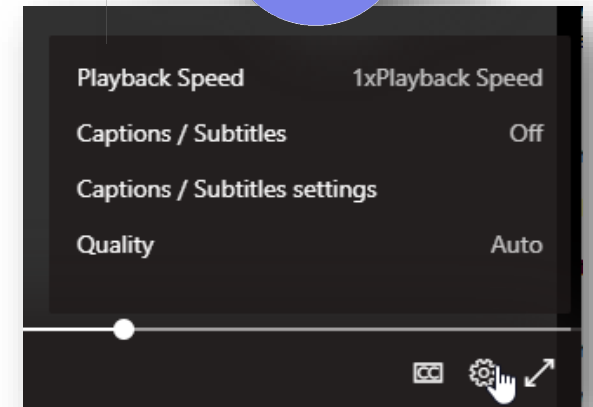
PACKAGE A

Diverse Subcontractor & Supplier Outreach Event

May 16, 2024

MICROSOFT TEAMS LIVE – QUICK TIPS

- All attendees are MUTED.
- To sign in, type your name and company in the Q&A panel on the right side of screen (Select the Q&A icon  in the upper right-hand corner to show Q&A).
- To turn on live captions and subtitles, select **Captions/Subtitles on** in your controls.
- To change the caption language, select **Caption/Subtitle settings**, and choose your preferred language.
- If you experience technical difficulties, please exit event and reenter.
- Attendees may experience a slight delay during slide transitions.
- A copy of the presentation will be available following the event.



This event is being recorded.



AGENDA

- 01 Meet Our Team
- 02 Local Project History
- 03 Program/Project Overview
- 04 Subcontract Opportunities
- 05 Working with KSTC
 - Diversity Commitment
- 06 Q&A

MEET OUR PRESENTERS



Kelli Kelly
DBE Outreach Manager



David Neidballa
Preconstruction Manager



Prince Davis
DBE Outreach Office
Engineer



Jerel Worthy
Community Outreach Manager

KSTC TEAM

Kiewit-Shea Tunnel Constructors has been selected as the Construction Manager at-Risk for Package A.



MEET OUR TEAM: KIEWIT-SHEA TUNNEL CONSTRUCTORS



Kiewit-Shea Tunnel Constructors (KSTC) is a joint venture comprised of Team Members Kiewit Infrastructure Co. (KIC) and J.F. Shea Construction, Inc. (Shea).

Kiewit and Shea began their collaborative relationship decades ago when the companies worked together on WMATA subway tunnel projects in the Washington, DC. Since 1983 the team has completed 23 successful tunneling projects, and our local presence dates back 34 years to the historic Phoenix Shot Tower tunnel project in Baltimore.

KSTC'S COMMITMENT TO BUILDING COMMUNITY



Equity: Maximizing opportunities for local small, and diverse businesses in the community



Partnership: Ensuring access to information, opportunities, and resources by leveraging longstanding community and industry relationships



Investment: Practicing stewardship, ensuring maximum return on Amtrak's investment to build business and workforce capacity



Accountability: Operating with transparency, maintaining accountability to the community and key stakeholders

KSTC LOCAL EXPERIENCE

Over 3 Decades of Building in the Baltimore Community

- Ellicott City North Tunnel (Current)
- Baltimore Phoenix Shot Tower Tunnel
- Fort McHenry Tunnel
- Calvert & St. Paul Bridges over MTA
- Multiple MTA improvement projects
- I83/JFX Expressway
- WMATA Yellow Line Tunnel and Bridge Repairs & Multiple other WMATA, DC & DMV Area Projects



FREDERICK DOUGLASS TUNNEL PROGRAM OVERVIEW

FREDERICK DOUGLASS TUNNEL PROGRAM OVERVIEW



The Frederick Douglass Tunnel Program (formerly the B&P Replacement Program) will upgrade a four-mile section of the Northeast Corridor (NEC), one of Amtrak's busiest passenger rail lines.

The centerpiece of the Program will be the construction of the new Frederick Douglass Tunnel, named for Maryland native and renowned civil rights leader Frederick Douglass.

The new tunnel will better serve the needs of approximately nine million commuters who rely on these lines for service annually.

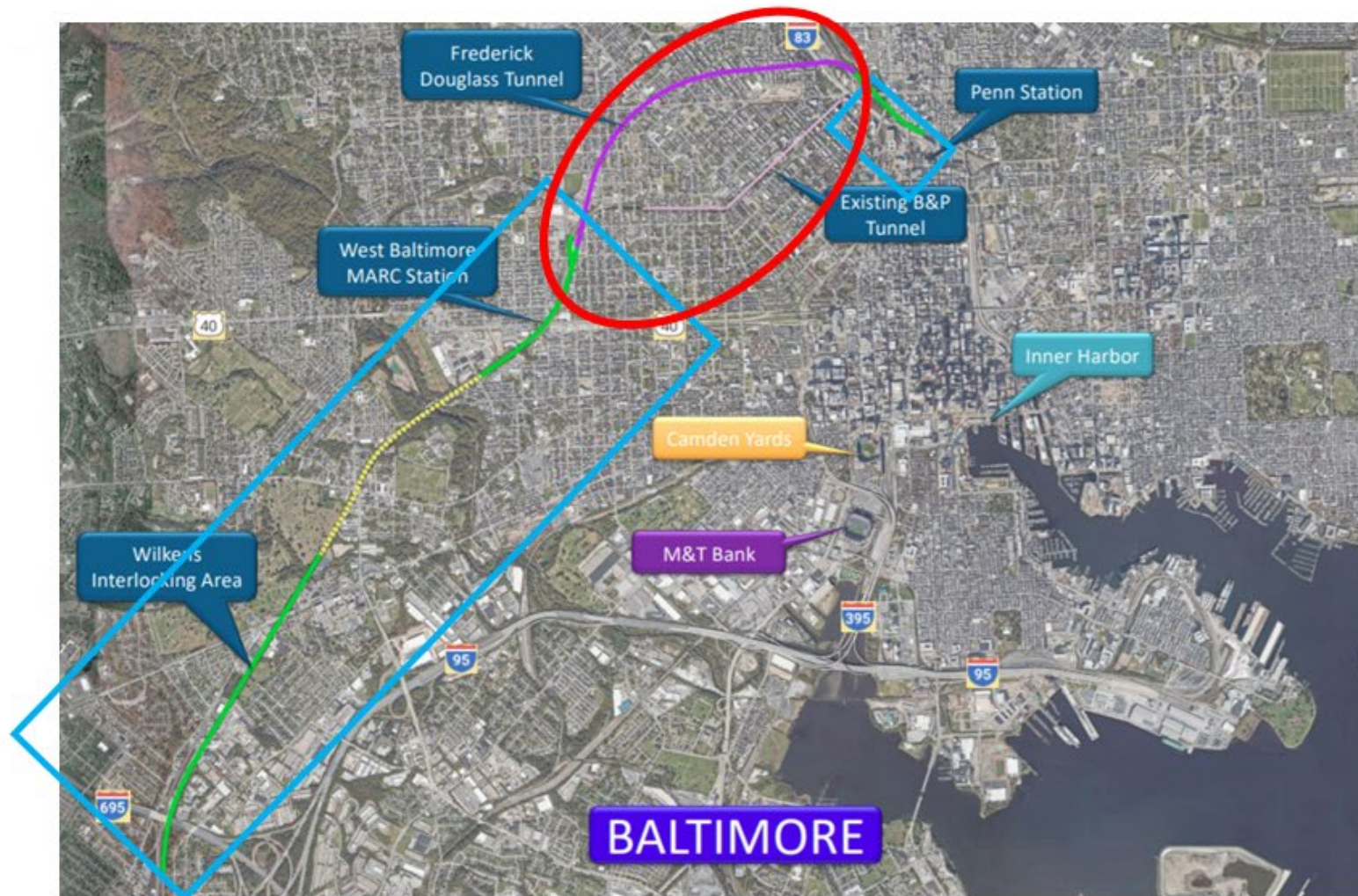
FREDERICK DOUGLASS TUNNEL PROGRAM OVERVIEW

The Frederick Douglass Tunnel Program will unfold in several stages:

- Final design and property acquisition (underway)
- Major construction is anticipated to begin in 2024
- Tunnel boring is planned to start in 2026



FREDERICK DOUGLASS TUNNEL PROGRAM OVERVIEW

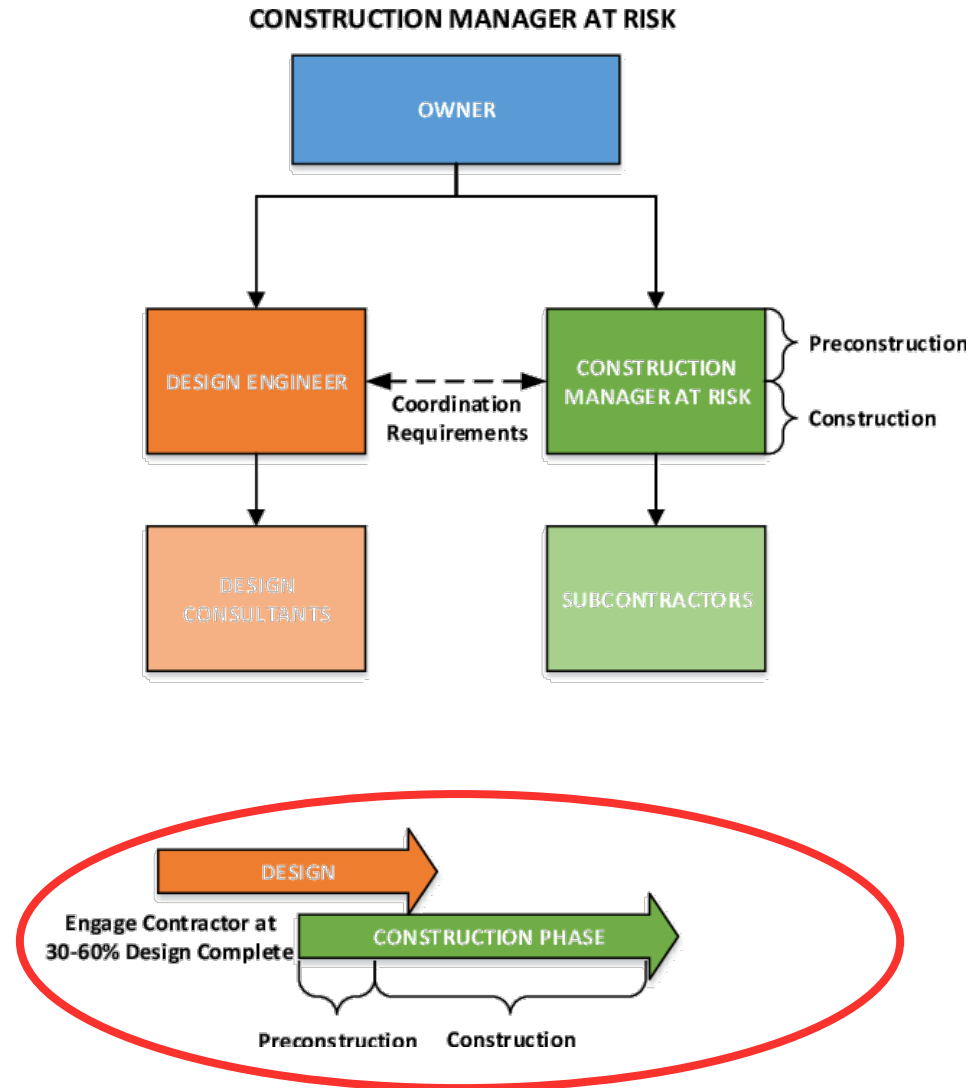


Package A – FDT Tunnel
Kiewit-Shea Tunnel
Constructors (KSTC)

Package B - Approaches
Clark /Stacey Witbeck (CSW)

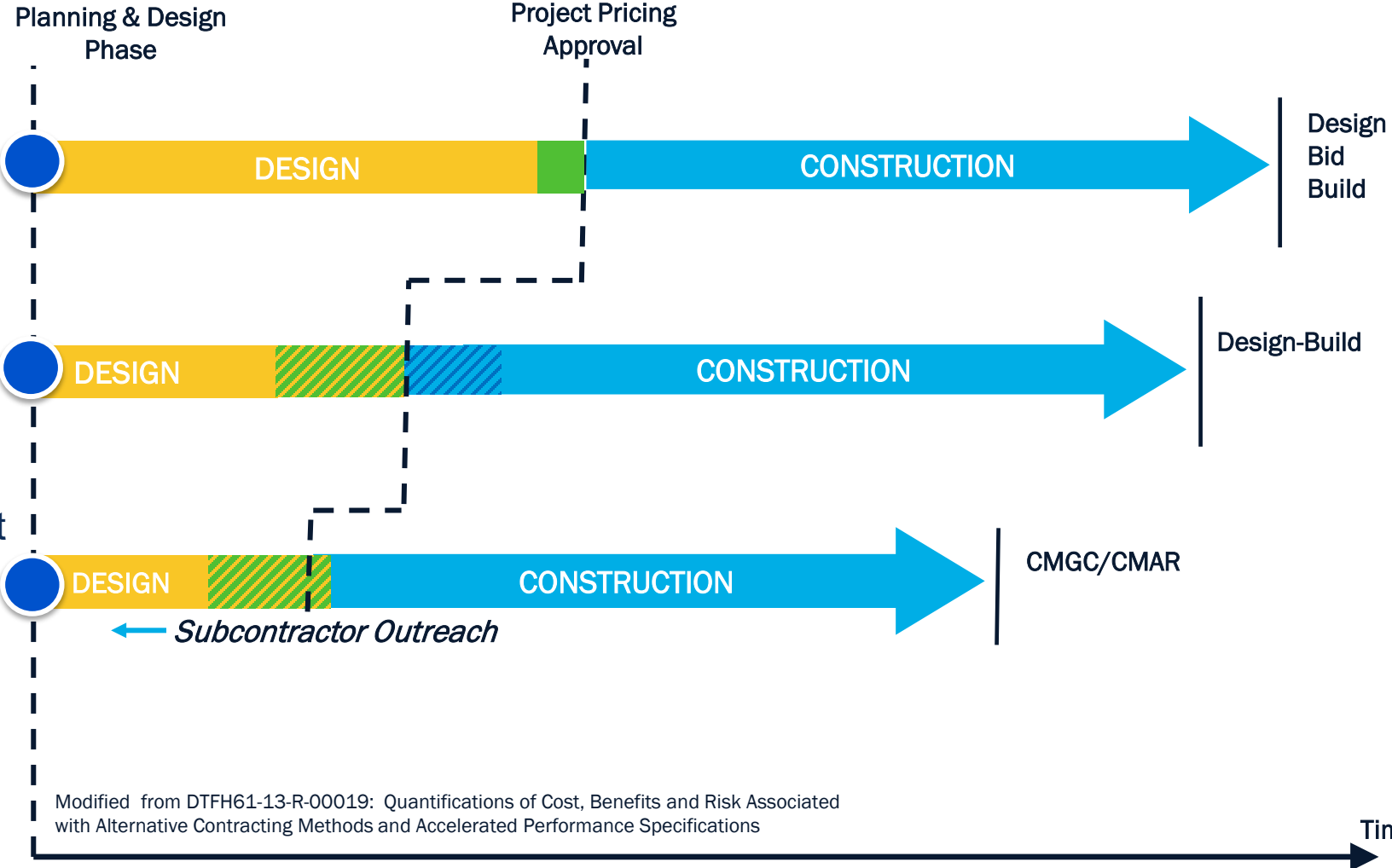
Package C – Systems & Fit Out
Wilkens Interlocking to FDT
North Approach
Future Procurement

UNDERSTANDING CONSTRUCTION MANAGER AT RISK



UNDERSTANDING CONSTRUCTION MANAGER AT RISK

- Common goals, collaboration, innovation and transparency among the parties – **Amtrak / CMAR / Designer / Other Project Stakeholders**
- Risk mitigation via team analysis
- Cost & schedule certainty
- Outreach and public procurement process for subcontracted work scopes, supplies, and services
- XBE business inclusion
- Focus on local / regional area businesses

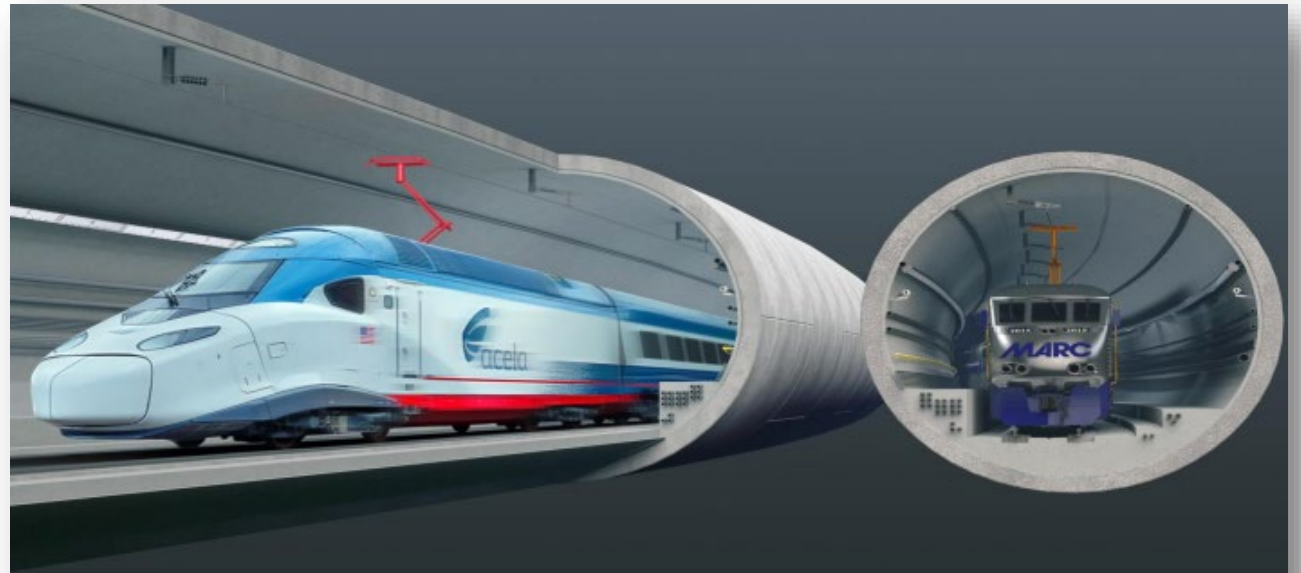


PACKAGE A PROJECT & TUNNEL EXCAVATION OVERVIEW

FREDERICK DOUGLASS TUNNEL – PACKAGE A SCOPE ELEMENTS

Construction Package A is part of the overall Frederick Douglass Tunnel Program and primarily consists of the construction of the new Tunnel.

The scope includes construction of the below-grade components, consisting of bored tunnels, mined caverns, cross-passages, and other substructures so that they are ready for fit-out with systems equipment by the contractor selected for Construction Package C.



Disclaimer: Rendering is based on current design and is subject to change as design develops.

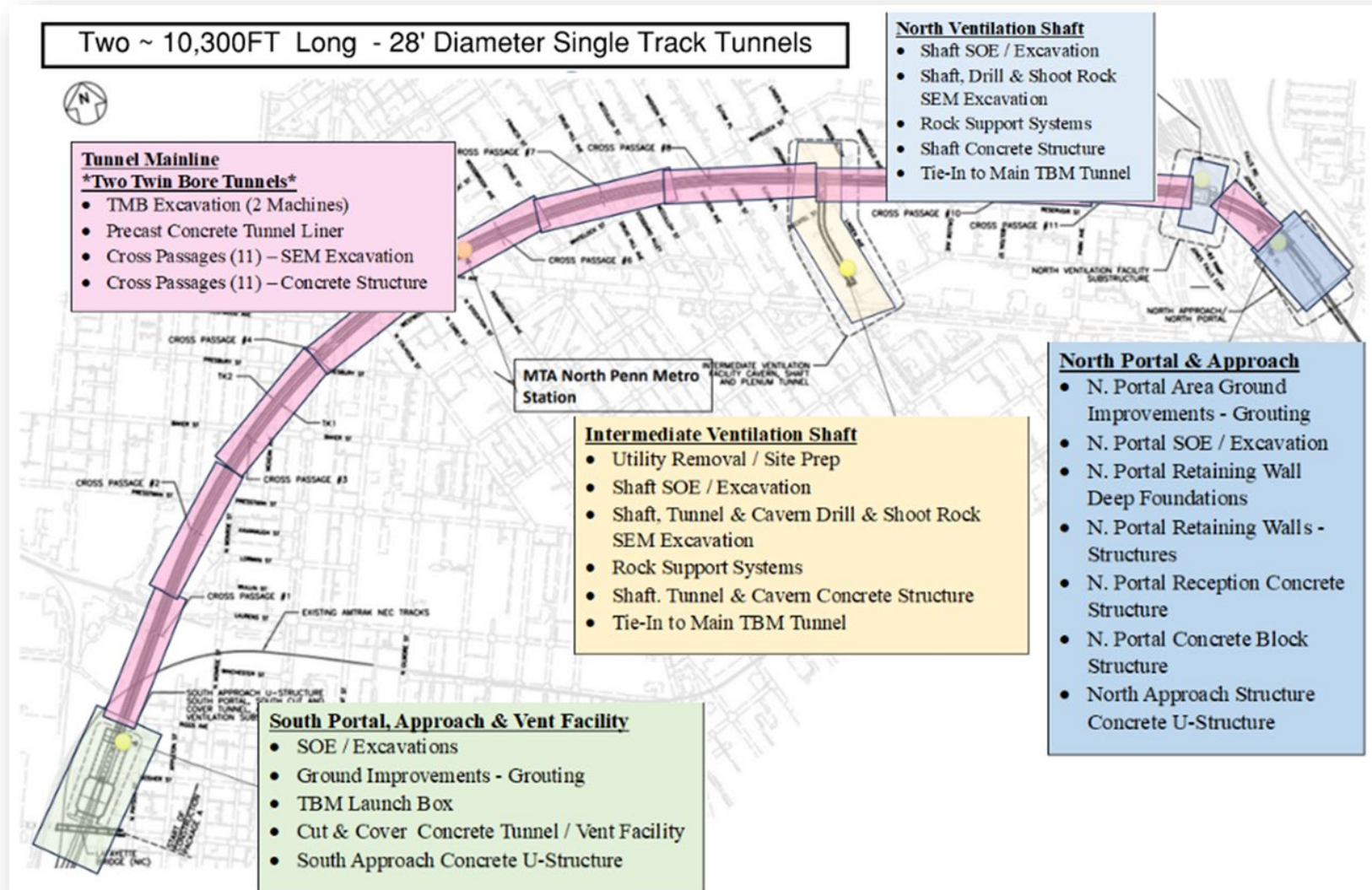
The new tunnel will consist of two single-track 26 ft. diameter tunnels excavated by tunnel boring machines (TBMs).

FREDERICK DOUGLASS TUNNEL – PACKAGE A SCOPE

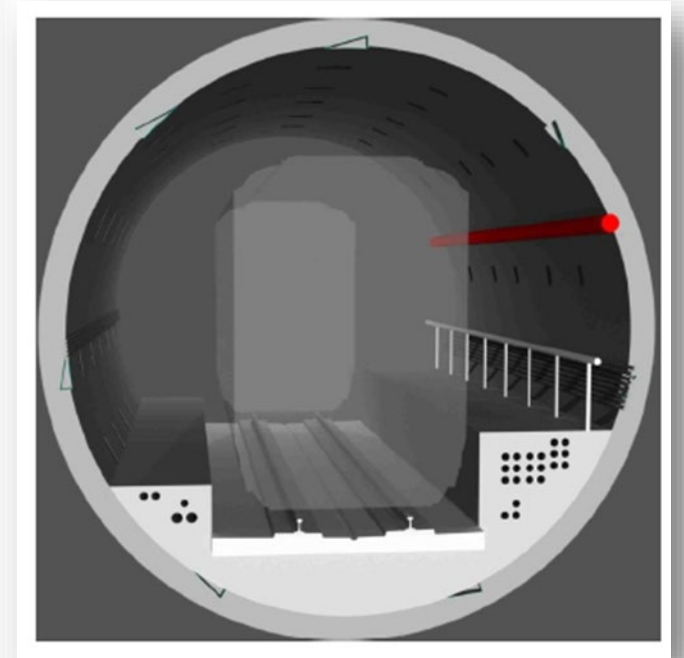
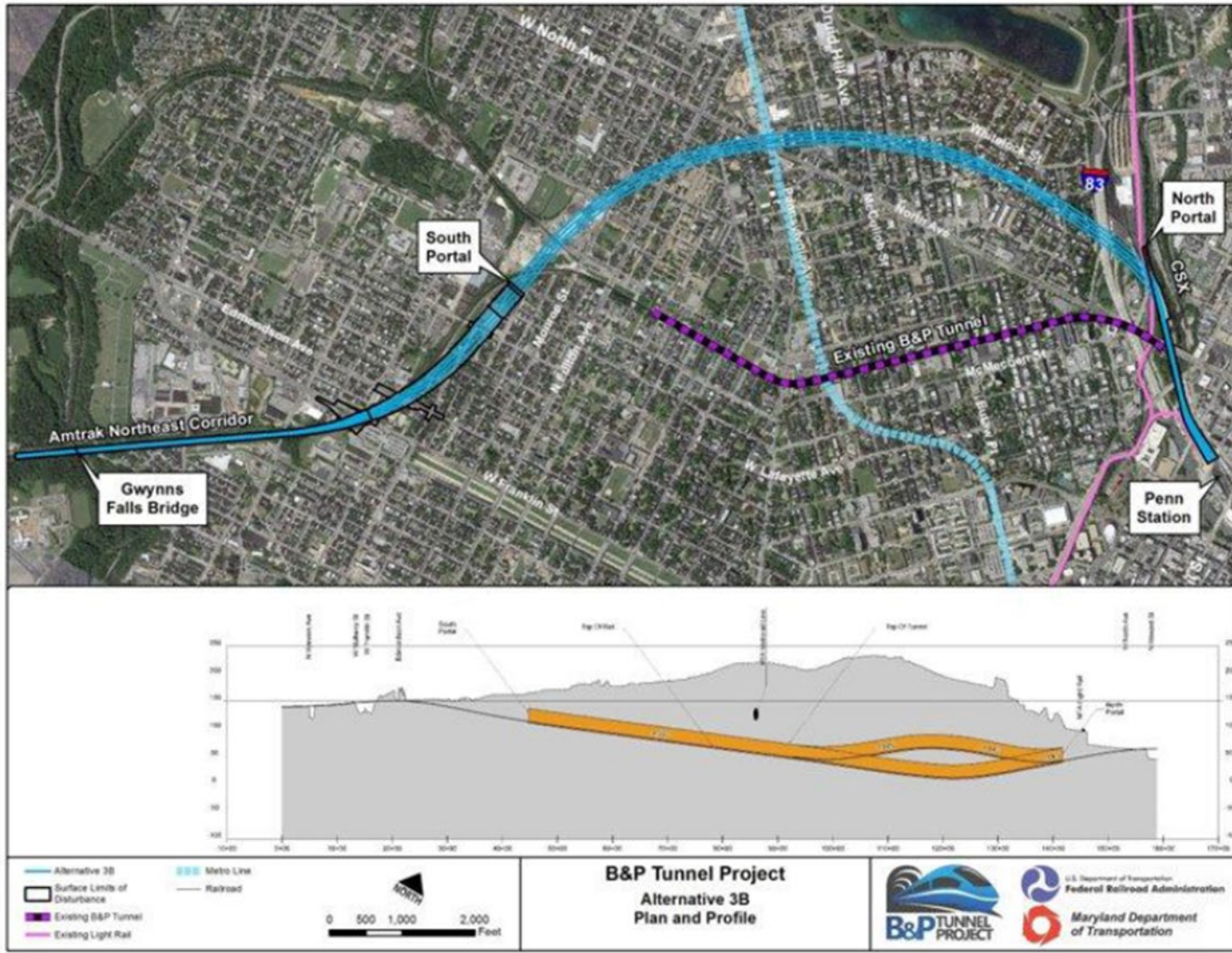
The Construction Work consists of the construction of the underground structures and tunnels for the Frederick Douglass Tunnel which includes:

- **Tunnels** - 2 TBM bored tunnels, approx 2 miles long each (10,300 ft), 27' Diameter, Precast Tunnel Lining (PCTL) and grout, 11 SEM Excavated, CIP concrete lined cross passages between tunnels; Pre-excavation grouting (limits TBD). Tunnel invert and systems / fit out by others.
- **South Ventilation / Portal Area** - SOE (support of excavation), excavation, SEM Excavation (blasting), prepare TBM launch area, water-tight foundation for South Ventilation Building. (SVF building by others).
- **Intermediate Ventilation Area** - SOE, 140' deep shaft, 600 ft long SEM mined plenum tunnel & 200 ft long cavern to connect to the TBM tunnels. IVF building is by others.
- **North Ventilation Area** - SOE, retaining wall along highway I-83, ~40) deep shaft. NVF building by others.
- **North Portal Area and North Approach** - SOE, excavation, TBM receiving area, pre-treatment, various retaining wall types and slabs.

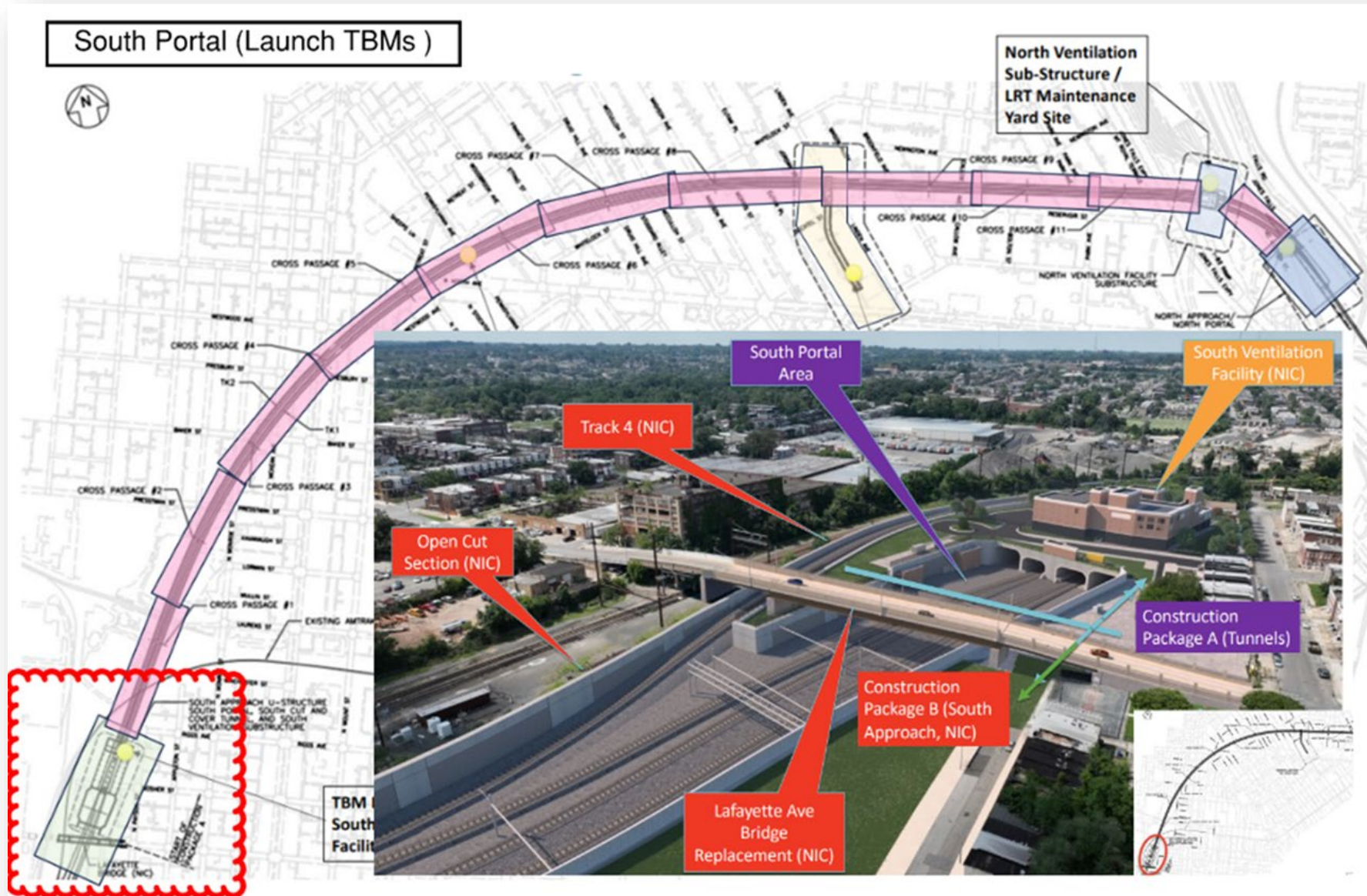
FREDERICK DOUGLASS TUNNEL – PACKAGE A SCOPE



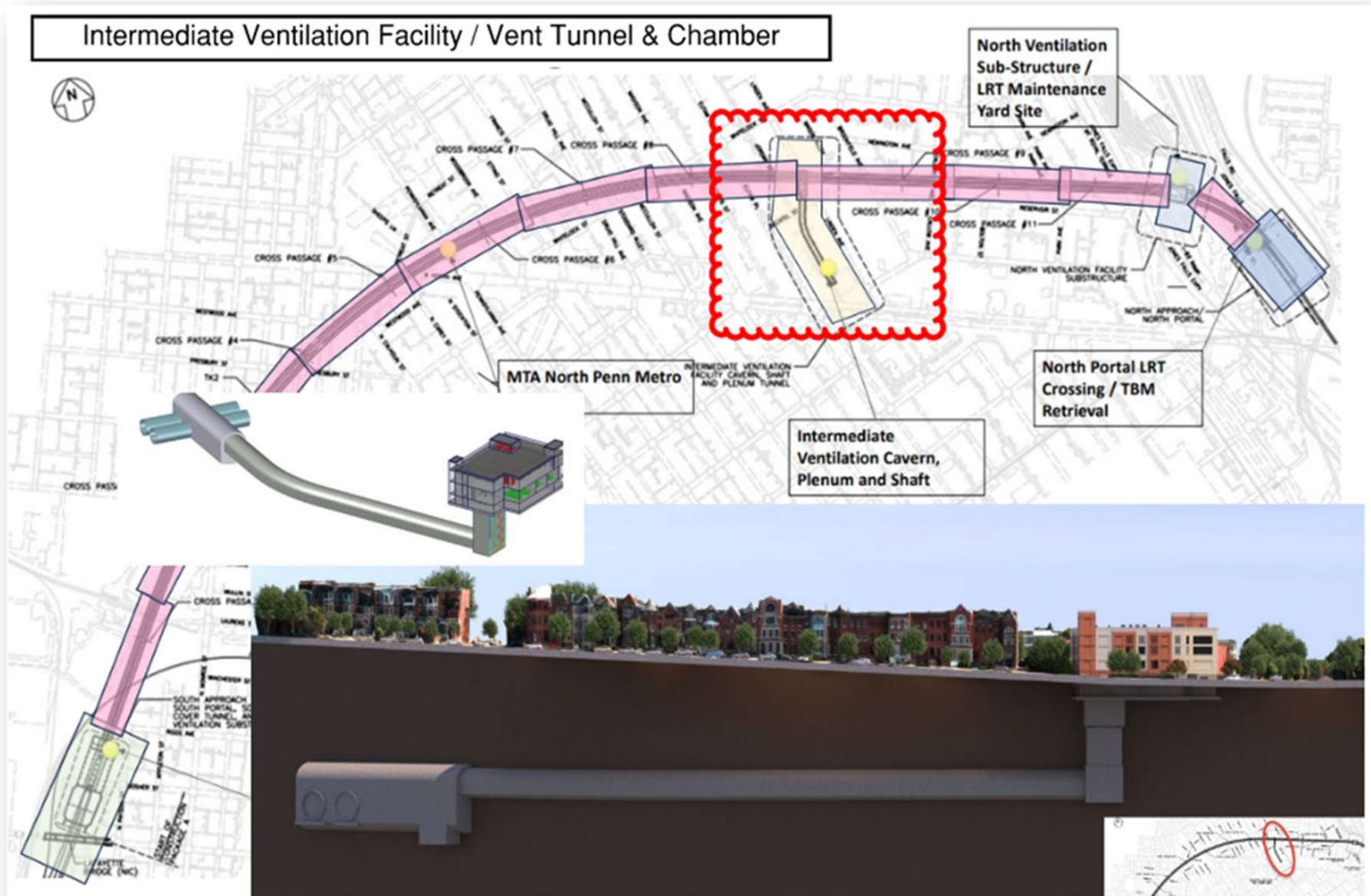
FDT PACKAGE A – TUNNELS



FDT PACKAGE A – SOUTH APPROACH, SOUTH VENT FACILITY, SOUTH PORTAL



FDT PACKAGE A – INTERMEDIATE VENTILATION FACILITY



PROJECT SCHEDULE MILESTONES – PACKAGE A

Key Milestones

- Pre-Con Services NTP: 1/18/2024 (in Progress)
- Construction Services NTP: 12/2024
- Excavation of shaft starts mid 2025
- Complete all activities necessary to launch TBM: Q2-Q3 2026
- Package A Project Completion: 2030

KSTC is committed to meeting or exceeding the business inclusion goals established for the project.

FDT Package A - 17.5%

Business inclusion goals for the Project include the following classifications:

- Disadvantaged Business Enterprises (DBE)
- Labor Surplus Area Firm
- Minority Business Enterprise
- Small Business Concern
- Women's Business Enterprise

BUSINESS INCLUSION GOALS

To count towards the business inclusion goal:

- Amtrak accepts Disadvantaged Business Enterprise certification from any state DOT under the U.S. DOT's Unified Certification Program (UCP). For more on DBE certification, go to: [https://www.transportation.gov/DBE State Websites](https://www.transportation.gov/DBE_State_Websites).
- Small Business should be verified using the U.S. Department of Commerce's Small Business Administration and its System for Award Management (SAM). For more info, visit the U.S. Small Business Administration's SAM at www.sam.gov.
- Minority and Women-owned Business Enterprises should be certified/verified through:
 - City of Baltimore as Certified Minority and Women-owned Business Enterprises
 - the National Minority Supplier Development Council and the Women's Business Enterprise National Council located respectively at <http://www.nmsdc.org/nmsdc> and <http://www.wbenc.com>.

GUARANTEED MAXIMUM PRICE (GMP) 1B - SUBCONTRACTS AND MATERIALS/SUPPLIES

1 Subcontract Bid Package

- Precast Concrete Tunnel Liner (PCTL) Early Fabrication

6 Materials/Supply Bid Packages

- Environmental Site Planning Services (incl NPDES)
- Initial Survey to Support Early Work
- Pre and Post Construction Survey Services
- Protection of Facilities (Construction Impact Assessments)
- Slurry Plant & Equipment
- South Approach / Portal SOE Designs & Ground Improvement Designs

GUARANTEED MAXIMUM PRICE (GMP) 2 - SUBCONTRACTS

40 Subcontract Bid Packages:

Letting 1 (22 Bid Packages)

- Compensation Grouting
- Early Civil Sitework
- Environmental Consulting
- F&I Reinforcing Steel
- Hourly Trucking
- Nurse/Paramedic Services
- On-Site Fueling
- Rock Blasting
- Security
- Shotcrete
- Surveying
- Temp Electrical Systems
- Temp Fencing
- Temp Water Treatment
- Waterproofing (PVC & Bituminous)

Letting 2 (18 Bid Packages)

- Asphalt
- Civil Excavation & Backfill
- Janitorial
- MOT
- Quality Testing & Inspection Services
- Rodent/Vector Control
- Saw cutting & Coring
- Shuttle Service
- Site Restoration
- Site Support Labor
- Snow Removal
- Sound Wall
- Street Sweeping
- Temp & Permanent Concrete Flatwork

GUARANTEED MAXIMUM PRICE (GMP) 2 - MATERIALS/SUPPLIES

30 Bid Packages (Material Contracts, Purchase or Service Agreement, Rentals, etc.)

Letting 1 (12 Bid Packages)

- Concrete Bulk Materials
- Concrete Formwork & Falsework
- Concrete Pumping
- Delegated Design Services
- Fabricated Structural Steel
- Ground Support Materials
- Nurse/Paramedic Facilities
- Precast Concrete
- Rock Conveyor
- Tunnel Muck Conveyor
- Tunnel Ventilation Piping & Equipment

Letting 2 (18 Bid Packages)

- Bulk Cement & Grout
- Aggregates
- Civil ST&S and Materials
- Explosives
- Dimensional Lumber
- Rock Bolts
- Outside Rent Heavy Lift Crane
- Rail Components
- Rail Carts
- Temp Piping
- Tunnel Probe Steel
- Field Offices
- Dumpsters
- Chemical Toilets
- Industrial Hygienist

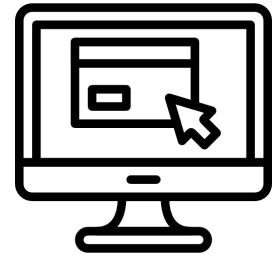
GUARANTEED MAXIMUM PRICE (GMP) 1 & 2 - BID DATES

Bid Letting	RFP Bid Date	RFP Due Date
GMP 1B	29-May	28-Jun
GMP 2 Letting 1	15-Jun	15-Jul
GMP 2 Letting 2	2-Jul	1-Aug

We also encourage participation by local, small, and diverse companies seeking to provide support services, such as printing, and office supplies.

SOLICITATION COMMUNICATIONS

- Notification via B2gNow to targeted NAICS codes in certified database
- Bid invitations and communications issued via BuildingConnected
- Direct email to project mailing list & scope specific bidders list
- Notification to community organizations
- Announcement on website



WORKING WITH KSTC

WHAT DOES IT TAKE TO WORK WITH US?

We evaluate companies on different criteria based on specific project requirements. This may include, but is not limited to:

- ✓ Safety performance
- ✓ Proven quality
- ✓ Certification
- ✓ Insurance and bonding capability
- ✓ On-time performance
- ✓ Years in business
- ✓ Reputation
- ✓ Past performance with Project Team members or Client
- ✓ Value-added products or services

Equity • Inclusion • Opportunity • Growth

SAFETY REQUIREMENTS

NOBODY GETS HURT

We take seriously our responsibility to keep each other and the public safe on our jobs. Our commitment to safety and our pursuit of Nobody Gets Hurt is defined by:

- Craft and staff collaboration to lead safety efforts on our projects.
- Site-specific orientations and trainings to prepare all team members for the work.
- Hazard analysis before any operation can begin; and each shift starts with a safety meeting with foremen and crews.
- Project safety inspection tours and assessments to bring staff and craft together to identify areas for improvement and best practices.



DIVERSITY AND NONDISCRIMINATION

Rooted by our corporate core values: people, integrity, excellence, stewardship – KSTC is committed to inclusive employment and business practices that reflect equity, respect, and accountability.

- Every KSTC team member is required to adhere to our Equal Employment Opportunity, Anti-Harassment and Non-Discrimination Policy.
- Respectful behavior extends to everyone on the team, as well as prospective employees, subcontractors, vendors and clients.
- We believe in an inclusive environment and community.
- We have policies in place to ensure that we have a workplace that is free from discrimination.

KSTC HAS ZERO TOLERANCE FOR DISCRIMINATION OR HARASSMENT.

GET READY FOR Q&A!

Please type your questions in the Q&A panel on the right.

Our moderator will direct to the appropriate presenter.



The screenshot shows a Microsoft Teams meeting window. The main content area displays a slide for the "FREDERICK DOUGLASS TUNNEL PROJECT PACKAGE A" with the subtitle "Diverse Subcontractor & Supplier Outreach Event" and the date "May 16, 2024". The slide features a high-speed train in a blue and white color scheme. The top right of the slide includes the "KIEWIT-SHEA TUNNEL CONSTRUCTORS" logo. On the right side of the Teams interface, the "Q&A" panel is open, showing a list of questions and answers. The "Ask a question" button at the bottom of the Q&A panel is circled in red. The bottom of the Teams window shows standard meeting controls like mute, video, and chat.

NEXT STEPS

NEXT STEPS

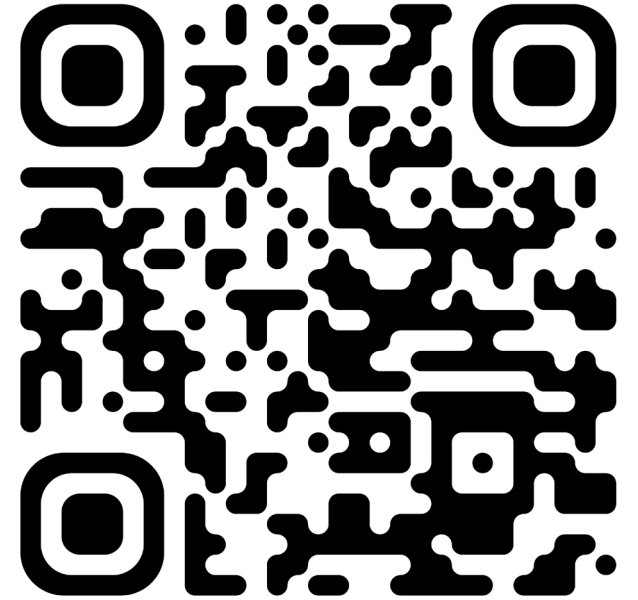
Step 1: Complete our Subcontractor Questionnaire to join our mailing list and help us understand your capabilities and bidding interest for this project.

Step 2: Sign-up for Building Connected to be added to our bidder's list!

Create an account with Building Connected:
<https://app.buildingconnected.com/create-account>

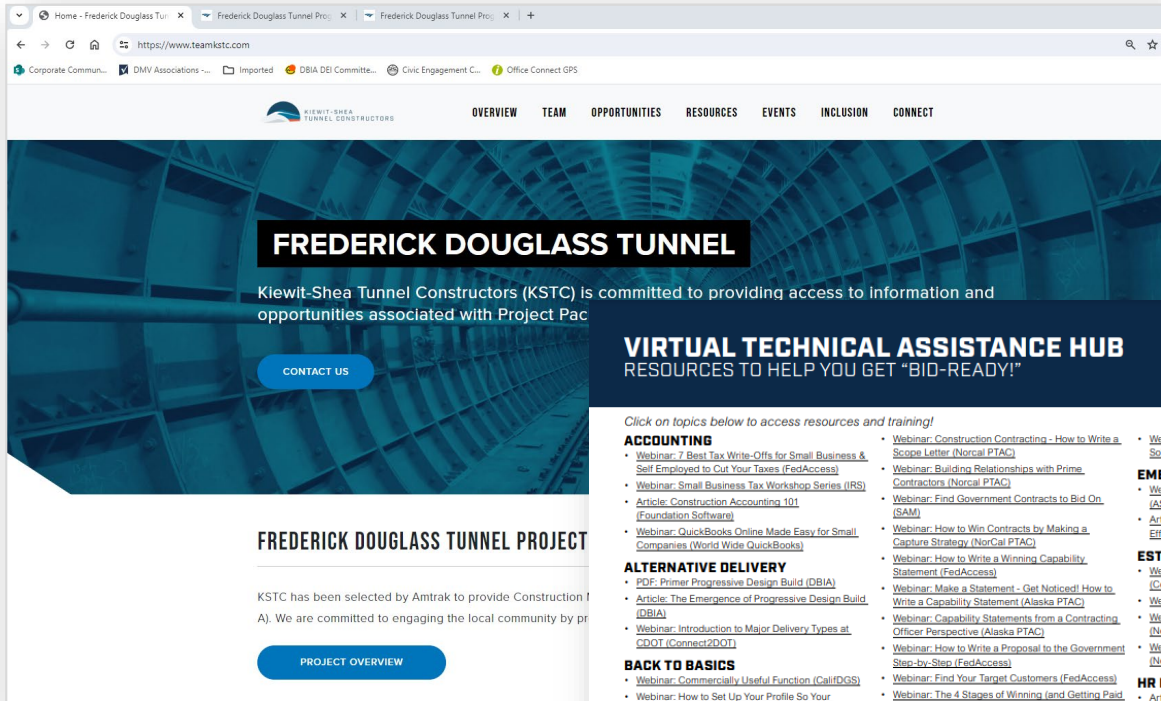
After completing our Subcontractor Questionnaire, you will be added to our database.

Please stay tuned for notifications via email and BuildingConnected once bid packages become available.



Scan QR Code to receive an emailed link to join our database

RESOURCES AND ASSISTANCE



FREDERICK DOUGLASS TUNNEL

Kiewit-Shea Tunnel Constructors (KSTC) is committed to providing access to information and opportunities associated with Project Pac

CONTACT US

FREDERICK DOUGLASS TUNNEL PROJECT

KSTC has been selected by Amtrak to provide Construction Manager services for the delivery of the Frederick Douglass Tunnel Project (Package A). We are committed to engaging the local community by providing...

PROJECT OVERVIEW

VIRTUAL TECHNICAL ASSISTANCE HUB

RESOURCES TO HELP YOU GET "BID-READY!"

Click on topics below to access resources and training!

ACCOUNTING

- Webinar: 7 Best Tax Write-Offs for Small Business & Self-Employed to Cut Your Taxes (FedAccess)
- Webinar: Small Business Tax Workshop Series (IRS) (Foundation Software)
- Article: Construction Accounting 101
- Webinar: QuickBooks Online Made Easy for Small Companies (World Wide QuickBooks)

ALTERNATIVE DELIVERY

- PDF: Primer Progressive Design Build (DBIA)
- Article: The Emergence of Progressive Design Build (DBIA)
- Webinar: Introduction to Major Delivery Types at CDOT (Connect2DOT)

BACK TO BASICS

- Webinar: Commercially Useful Function (CalIFDGS)
- Webinar: How to Set Up Your Profile So Your Business Gets Found: the Dynamic Small Business Search (FedAccess)
- Article: North American Industry Classification System NAICS (Census)
- Webinar: Registering New Entities for Government Contracts (SAM)

BONDING

- PDF: AGC Surety Claims Guide (AGC)
- PDF: How to Obtain Surety Bonds (SID)
- PDF: The Importance of Surety Bonds in Construction (SID)
- Webinar: Surety Bonds (SBA)
- Webinar: SBA's Surety Bond Guarantees

- IS: Colorado SBDC
- PDF: The Colorado Business Resource Book (Colorado SBDC)
- Webinar: You've Landed a Construction Contract, Now What? (Norcal PTAC)

- Webinar: Construction Contracting - How to Write a Scope Letter (Norcal PTAC)
- Webinar: Building Relationships with Prime Contractors (Norcal PTAC)
- Webinar: Find Government Contracts to Bid On (SAM)
- Webinar: How to Win Contracts by Making a Capture Strategy (NorCal PTAC)
- Webinar: How to Write a Winning Capability Statement (FedAccess)
- Webinar: Make a Statement - Get Noticed! How to Write a Capability Statement (Alaska PTAC)
- Webinar: Capability Statements from a Contracting Officer Perspective (Alaska PTAC)
- Webinar: How to Write a Proposal to the Government Step-by-Step (FedAccess)
- Webinar: Find Your Target Customers (FedAccess)
- Webinar: The 4 Stages of Winning (and Getting Paid for) a Government Contract (FedAccess)
- Webinar: Your 1st Government Contract (FedAccess)
- Webinar Series: Understanding Your Customer (SBA)
- Webinar: Microsoft Office Word Basics (IS: Colorado SBDC)
- Webinar: Social Media: Essential Principles for Small Businesses (Pikes Peak SBDC)
- Webinar: Digital Business Fundamentals (Aurora-South Metro SBDC)
- Webinar Series: Marketing 101 (SBA)

CERTIFICATION

- Webinar: Federal Government Certifications for Small Business Owners (FedAccess)
- Article: Construction Contracting - How to Write a Scope Letter (Norcal PTAC)
- Article: Contract Review Reminders (CE)
- Article: Indemnification Clauses: All You Need to Know (AIATrust)
- Webinar: Managing Contract Changes (Alaska PTAC)

- Webinar: How to Read a Federal Government Solicitation for a Contract RFP/RFQ (FedAccess)

EMERGING TECHNOLOGY

- Webinar: Basics of Intellectual Property (ASBDC USPTO)
- Article: Use Technology to Create an Inclusive Effective Culture (CE)

ESTIMATING

- Webinar: Basics of Bidding & Estimating (Colorado SBDC/DOIT)
- Webinar: Price to Win and Price to Profit (Fed)
- Webinar: Estimating & Bidding The Basics (Norcal PTAC)
- Webinar: Estimating & Bidding Best Practice (Norcal PTAC)

HR BEST PRACTICES

- Article: The Complete Guide to Human Resources for Small Business (When I Work)
- Article: Employee Benefits (AIA)
- Webinar: Employee Recruitment and Retention Overview (SBA)
- Article: Diversity in Construction Seven Tips Successful DEI Programs (CE)

INSURANCE

- PDF: Navigating Health Care for Employers (Colorado SBDC/Denver Metro CoCo)
- Webinar: Business Insurance 101 for Small Businesses (Pikes Peak SBDC)
- Webinar: Contractor's Insurance Programs (Norcal PTAC)
- Article: Construction Wrap Up Insurance Programs (CE)
- OCIP And CCIP Insurance Overview (constructionexec.com)

- Article: Construction Wrap Up Insurance Programs (CE)
- OCIP And CCIP Insurance Overview (constructionexec.com)



SUBCONTRACTOR / SUPPLIER BIDDER'S REFERENCE GUIDE

Kiewit-Shea Tunnel Constructors (KSTC) has been selected by Amtrak to provide Construction Manager services for the delivery of the Frederick Douglass Tunnel Project (Package A).

To learn more about the Frederick Douglass Tunnel Program, visit: www.amtrak.com/fdtunnel

STAY INFORMED!

KSTC is committed to keeping you informed. For more information about upcoming project events and opportunities, visit: <https://www.teamkstc.com/>

KSTC IS CURRENTLY SEEKING SUBCONTRACTOR / SUPPLIER BIDS AND PROPOSALS

GMP 1 Bid packages are expected to be released through BuildingConnected on May 29, 2024*

JOIN OUR DATABASE!

Follow these steps to help us understand your capabilities and bidding interests and ensure you are notified about future opportunities and events:

1 Complete our Subcontractor Questionnaire

Please indicate the scope(s) of work you are interested in bidding!

2 After completing the Subcontractor Questionnaire, create an account with BuildingConnected at: app.buildingconnected.com/createaccount

Once your company information has been received through our Subcontractor Questionnaire, you will be added to our database. Please stay tuned for notifications via email and BuildingConnected once bid packages become available.

1 Complete our Subcontractor Questionnaire to help us understand your bidding interests.

- Please indicate the scopes of work you are interested in bidding!

2 Create an account with BuildingConnected at: app.buildingconnected.com/createaccount

- For Help Visit: buildingconnected.zendesk.com/hc/en-us

3 After completing our Subcontractor Questionnaire, you will receive an invitation to bid from BuildingConnected for the scopes of work you are interested in bidding.



GOALS AND CERTIFICATION INFORMATION

KSTC is committed to meeting the business diversity goals established by Amtrak for this Project.

- Business inclusion goals for the Project include the following classifications:
- Disadvantaged Business Enterprise (DBE)
 - Minority Business Enterprise
 - Labor Surplus Area Firm
 - Small Business Concern
 - Women's Business Enterprise

For participation to count towards established DBE goal, firms should be certified as Disadvantaged Business Enterprise (DBE) under the U.S. Department of Transportation's (U.S. DOT's) Unified Certification Program (UCP).

- For more information on DBE certification, visit: <https://www.transportation.gov/DBEStateWebsites>

CONTACT US

Email: FDTOutreach@TeamKSTC.com

Website: <https://www.teamkstc.com/>

We believe in partnering and investing in the local, small, and diverse businesses and workforce in the communities where we work and live.

- (Norcal PTAC)
- Webinar: Teaming Strategies (Alaska PTAC)

Visit our Virtual Technical Assistance Hub!

FREDERICK DOUGLASS TUNNELING PROJECT (PACKAGE A)

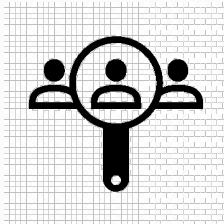
QUESTIONS AND ANSWERS

WE'RE BUILDING MORE THAN A TUNNEL

KSTC will maximize opportunities for small and diverse businesses through:



Dividing work into economically feasible packages ensure equitable and meaningful participation



Actively seeking out diverse businesses



Fostering the development and growth of existing and potential diverse business partners



Building upon new and existing subcontractor relationships to foster long-term partnerships



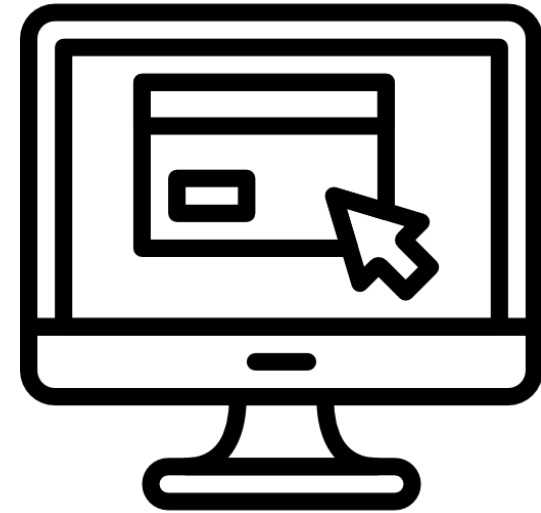
Partnering with community and industry organizations focused on supporting small and diverse businesses

Equity • Inclusion • Opportunity • Growth

GET CONNECTED. STAY CONNECTED.



FDTOutreach@TeamKSTC.com



www.teamkstc.com

**For general information about the project, visit:
<https://www.amtrak.com/fdtunnel>**

THANK YOU!